

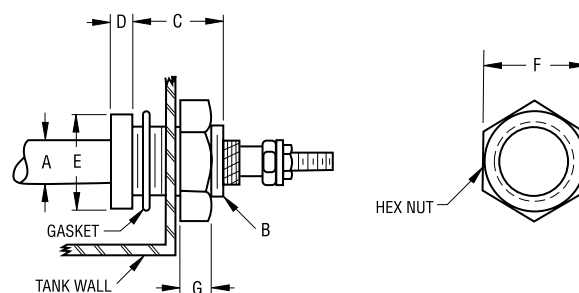
Mounting Accessories

Mounting Accessories

Two types are available: Threaded Fittings and Mounting Plates.

Threaded Fittings

Threaded fittings are furnished with nuts and optional fiber gaskets, washers and lockwashers. They are designed for immersion applications. Fittings are silver soldered, welded or mechanically pressed (staked) to the sheath. Welding requires sheath and fitting material compatibility. Standard elements require two fittings, one for each terminal end. Two-pass elements require only one fitting.



Dimensional details shown in Table VI

Table VI

Fitting Part No.	Material	A (Inches)	B (Thread Size)	C (Inches)	D (Inches)	E (Inches)	Hex Nut (Inches)	
							F	G
1007139	Brass	0.312	1/2 - 20	7/8	5/16	3/4	3/4	5/16
1007219	Brass	0.312	9/16 - 18	1/2	1/8	1	7/8	5/16
1007142	Brass	0.312	5/8 - 18	1/2	5/16	1	7/8	1/8
1007215	Steel	0.312	3/4 - 16	1-1/16	1/4	1	1	3/16
1007127	Brass	0.475	5/8 - 18	9/16	5/16	1	7/8	1/8
1007225	Brass	0.475	3/4 - 16	7/8	1/4	*1	1	1/8
1007228	Stainless	0.475	3/4 - 16	7/8	1/4	*7/8	7/8	1/8
1007279	Stainless	0.475	3/4 - 16	3/8	3/16	*1	7/8	1/8
1006846	***Steel	0.475	5/8 - 18	1/2	1/8	1	7/8	1/8
1000058	**Steel	0.475	3/4 - 16	1/2	1/8	*7/8	1	3/16
1007249	Steel	0.475	3/4 - 16	1-1/16	3/16	*1	1	3/16

* These fittings have a hex flange instead of a round flange.

** This fitting is copper plated steel, normally furnished on finned tubular elements with palnut type locknuts standard. Gaskets are not furnished unless specified.

*** This fitting is nickel plated steel, with palnut type locknuts standard.

Mounting Plates

Mounting plates provide a simple, convenient means of holding elements in place in an airstream and other applications where the element is not immersed in a liquid. Stainless steel plates are mechanically pressed (staked) or tack welded to stainless sheathed elements; copper-plated steel plates are brazed to steel sheathed elements.

The mounting plates shown to the right are for .475" diameter elements. Consult factory for .312" diameters.

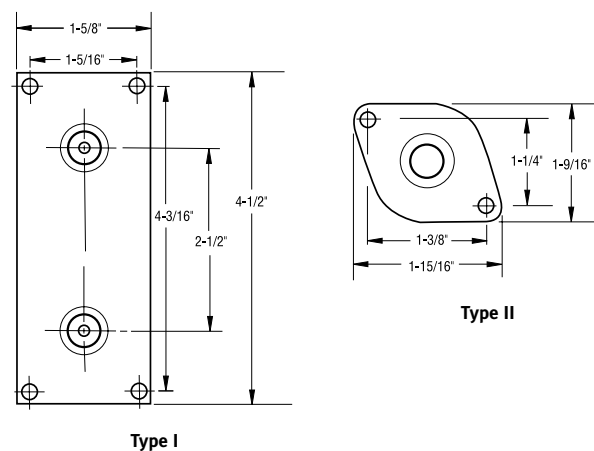


Table VII

Heating Element Configuration	Mounting Plate	
	Type	Material
2-1/2" C-C U-Bent	I	Steel
2-1/2" C-C U-Bent	I	Stainless
Straight or Two-Pass	II	Steel
Straight or Two-Pass	II	Stainless